

LIVE IN NATURE'S BACKYARD



WE ARE THE HOME MAKERS

Taking million dreams a step closer to reality...

We are a leading construction company. We started in 2000 and continue to scale, new heights by acquiring properties and developing them independently. We have set new benchmarks and carved a niche for quality construction and modern amenities in Panvel, Navi Mumbai.

We have an impeccable reputation of dependability and trust.

Our secret to excellence is our team. We are associated with leading architects and designers who shape your dreams and our ideas into homes.



We care about customer satisfaction, provide value for money, high business ethics and above all nurture safety and security. We build relationships in the process of creating magnificent structures. Our fine understanding of the needs and preferences of our clients has given us an ever-growing list of satisfied customers.

Our growing reputation for excellence, resourcefulness and responsiveness is a natural consequence of the values that have guided our company since its founding.

We are enthusiastic about what we do, we are sensitive to the needs of our customers, and willing to accept total responsibility of our deeds.



GOVIND GREENS

If you are looking for:

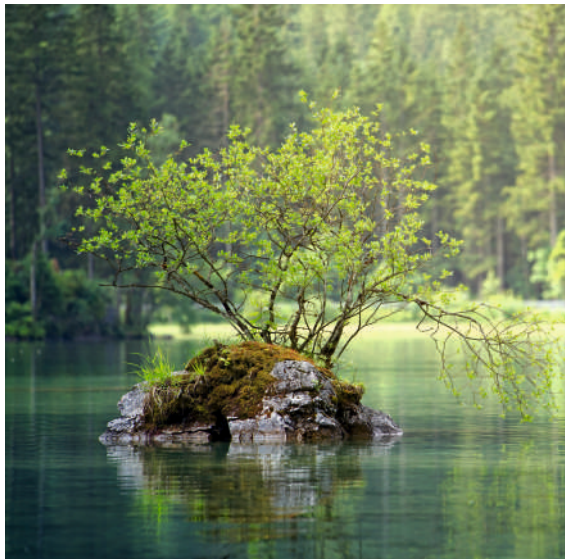
The freshness of nature's bounty.

The warmth of congenial company.

The comfort of complete privacy.

The beauty of contemporary design.

The serenity of peaceful ambience.



We present Govind Greens, with everything you need to live the life that you are used to at your command. The conveniences of the city and the upcoming airport are a short drive away. These can be readily accessed when needed without intruding the serenity of your home.



Govind Greens, Near Fortune Calypso, Survey No.: 71/2, Village Kevale, Panvel

AMENITIES:

- ~ Landscape garden with children's play area
- ~ CCTV camera for external security
- ~ Facility for indoor games
- ~ Decorative entrance lobby
- ~ Intercom service in all flats
- ~ Power back up for lifts, pump room and common passages
- ~ Decorative main door with polished veneer finish
- ~ 2' x 2' vitrified tiles in all rooms
- ~ Copper wiring in concealed conduits with adequate points in all rooms



- ~ Gypsum finish for internal walls
- ~ High quality acrylic paint for external walls and plastic emulsion on internal walls
- ~ Granite kitchen platform with stainless steel sink and 4' designer dado tiles
- ~ Anodised heavy section aluminium sliding windows with mosquito nets
- ~ Concealed plumbing with superior quality chrome plated fittings
- ~ Floor to ceiling designer tiles in toilets

GOVIND GREENS
1st & 3rd FLOOR PLAN

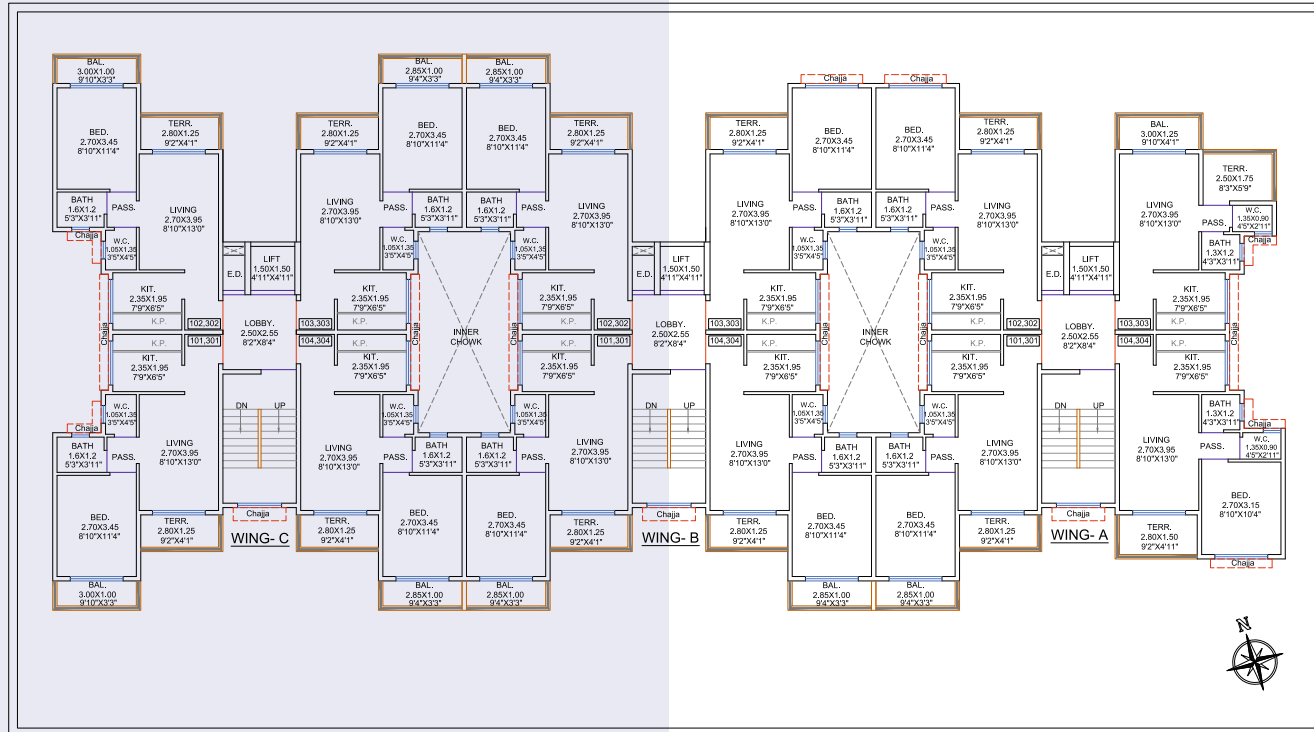


GOVIND GREENS
2nd & 4th FLOOR PLAN



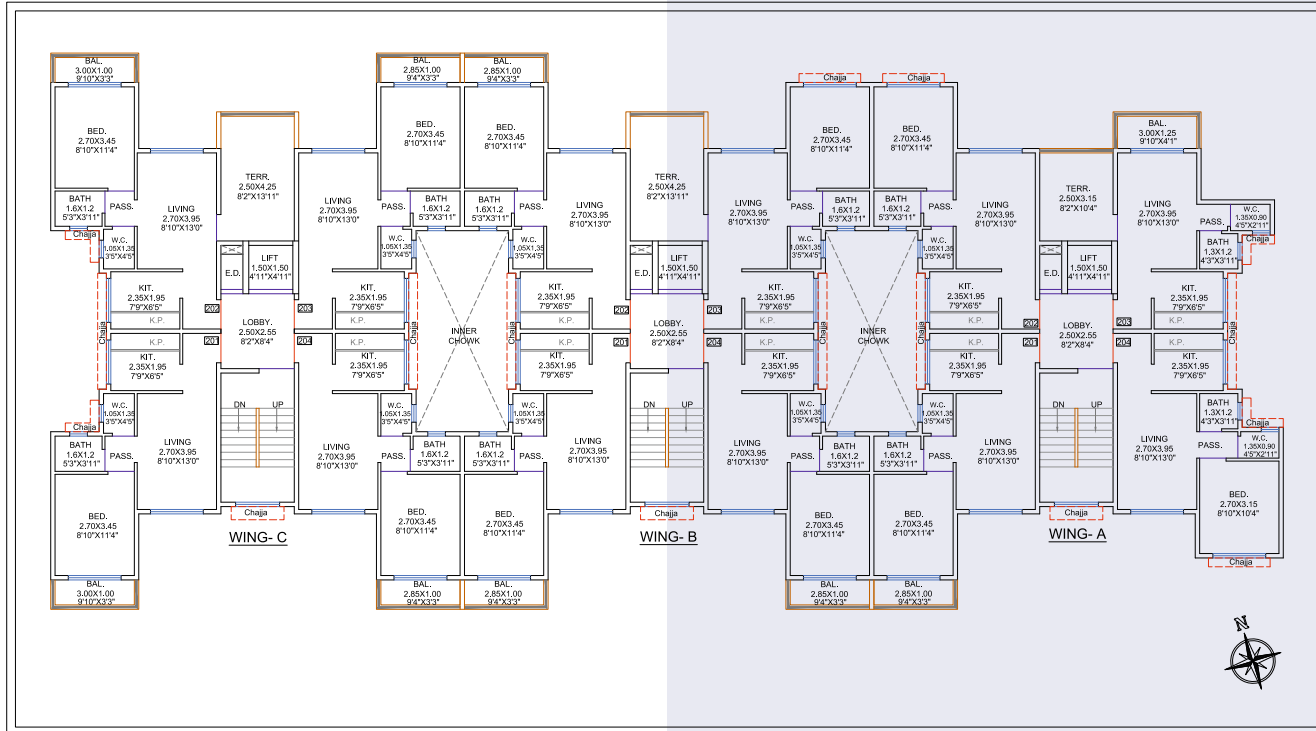
GOVIND GREENS

Typical 1st & 3rd FLOOR PLAN



GOVIND GREENS

Typical 2nd FLOOR PLAN



Projects completed by Priyal Group

Project Name	Built up Area (Sq. Ft.)	No. of Units
Govind Dham	19,500	34
Govind Gardens	53,000	42
Govind Anmol	13,500	26
Govind Sagar Phase 1	48,000	56
Govind Sagar Phase 2	55,000	48
Govind Sai Darshan	27,000	29
Govind Elite	12,500	9
Puskaraj - Redevelopment	13,000	12
Govind Green Fields	37,000	36
Govind Laxmi	10,500	13
La Mer Residency	1,08,000	143
La Mer Soliaire	14,500	12
Govind Harmony	18,600	26

— A JOINT VENTURE BETWEEN —



Priyal Group
Building Relations



TIRUMA GROUP
BUILDING HOMES SINCE 1987

Site Address: Govind Greens, Near Fortune Calypso, Survey No.: 71/2, Village Kevale, Panvel.
MahaRERA No.: P52000029833 | Visit us on <http://maharera.mahaonline.gov.in>

For details contact: +91 83690 04055, 72081 45195

www.priyalgroup.in

Head Office: Priyal Group, 7, Tirthraj Building, F. P. No. 20, Old Thana Naka Road, Panvel, Navi Mumbai - 410 206.

Mumbai Office: A-702, 7th Flr., Valencia Bhakti Park, Anik Wadala Link Road, Wadala (E), Mumbai - 400 037.

Architect:

AN.ARCH Architect & Planners

Office No: 20 & 21, Raheja Arcade, Sector - 11, Plot No: 61, CBD Belapur - 400 614.

Structural Engineer:

Rahul Sashte & Associates

Office No: 16 & 18, Shree Ballaleshwar, Near Sawarkar Chowk, Panvel.